

Apolipoprotein F Antibody
Rabbit mAb
Catalog # AP92174**Specification**

Apolipoprotein F Antibody - Product Information

Application	WB, ICC
Primary Accession	Q13790
Clonality	Monoclonal
Other Names	
Apof; Apolipoprotein F; LTIP;	
Isotype	Rabbit IgG
Host	Rabbit
Calculated MW	35399 Da

Apolipoprotein F Antibody - Additional Information

Dilution	WB~~1:1000 ICC~~N/A
Purification	Affinity-chromatography
Immunogen	A synthesized peptide derived from human Apolipoprotein F
Description	Minor apolipoprotein that associates with LDL. Inhibits cholesteryl ester transfer protein (CETP) activity and appears to be an important regulator of cholesterol transport. Also associates to a lesser degree with VLDL, Apo-AI and Apo-AII.
Storage Condition and Buffer	Rabbit IgG in phosphate buffered saline , pH 7.4, 150mM NaCl, 0.02% sodium azide and 50% glycerol. Store at +4°C short term. Store at -20°C long term. Avoid freeze / thaw cycle.

Apolipoprotein F Antibody - Protein Information**Name** APOF**Function**

Minor apolipoprotein that associates with LDL. Inhibits cholesteryl ester transfer protein (CETP) activity and appears to be an important regulator of cholesterol transport. Also associates to a lesser degree with VLDL, Apo-AI and Apo-AII.

Cellular Location

Secreted

Tissue Location

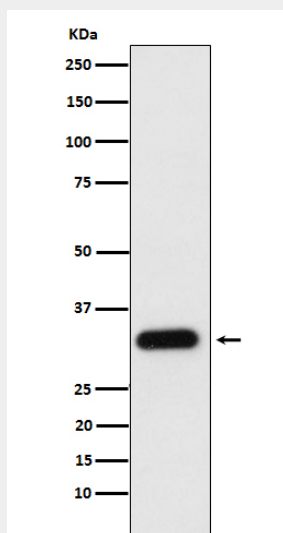
Expressed by the liver and secreted in plasma.

Apolipoprotein F Antibody - Protocols

Provided below are standard protocols that you may find useful for product applications.

- [Western Blot](#)
- [Blocking Peptides](#)
- [Dot Blot](#)
- [Immunohistochemistry](#)
- [Immunofluorescence](#)
- [Immunoprecipitation](#)
- [Flow Cytometry](#)
- [Cell Culture](#)

Apolipoprotein F Antibody - Images



Western blot analysis of Apolipoprotein F expression in human plasma cell lysate.